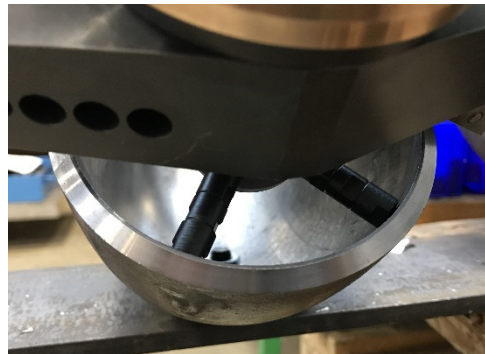


# Thermotech Elbow Mandrels



Thermotech Elbow Mandrels are designed for beveling pipe elbows. We offer five types each having its own diameter range.

## Elbow Mandrel TE43



TE43 is the smallest elbow mandrel that works by replacing the standard MF3i machine sleeve with the mandrel sleeve. All the legs move the same amount when clamping so the adjustment is limited. Special liner is used for positioning the machine straight. Best results achieved when clamped very close to the end of the pipe elbow where the surface is straight.

## Elbow Mandrels TE80, TE120, TE160, TE250



These elbow mandrels all work according to the same basic principle; Mandrel is clamped to a pipe elbow via screws on the inner diameter of the mandrel housing. Each extendable leg can be adjusted individually so centering is easily done. Legs have freely rotating heads to protect the inner surface of the pipe from damage when tightening the legs.

Liners hold the mandrel in place while fitting the elbow to the pipe. Dimension scale on the liners make centering easy. With the standard liners it is possible to install the mandrel close to the pipe end. With the help of additional liner extension bits mandrel can be installed deeper for beveling the inside diameter of the pipe.



## Elbow Mandrel Kit Include;

- “Non-damaging” clamping legs for the entire diameter range.
- Special jaws for MF4i and MF5i
- Liners for easy setup
- Liner extension bits for deeper setup position for TE160 and TE250.
- Required hand tools for installation.
- Packing box

	Elbow Mandrel Dimensions	
	ID (mm)	OD (mm)
<b>TE43</b>	-	43
<b>TE80</b>	47	80
<b>TE120</b>	78	114
<b>TE160</b>	125	160
<b>TE250</b>	178	250

Article Number	Elbow Mandrel	Beveling machine	CLAMPING *		WORKING RANGE*			
			MIN ID (mm)	MAX ID (mm)	MIN OD (mm)	(NPS)	MAX OD (mm)	(NPS)
300601	TE43	MF3i	43	106	60.5	2"	114	4"
300602	TE80	MF3i	102	153	114.3	4"	160	6"
300603	TE120	MF4i**	124	203	168.1	6"	219	8"
300604	TE160	MF5i**	216	310	273	10"	332	12"
300605	TE250	MF5i	273	455	323.9	12"	460	18"

\* For pipe elbows with dimension A=D or larger

\*\* used with special jaws that are delivered with the mandrel.

